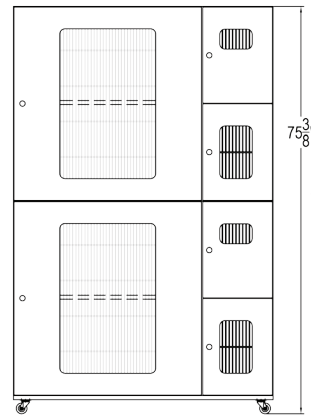


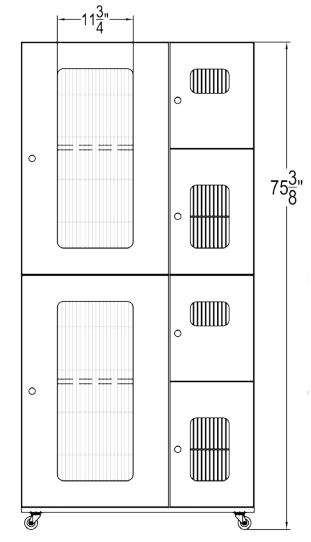
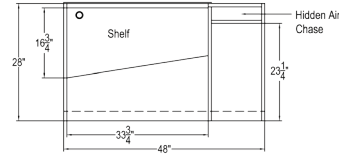
Shelter Cat Condo

Looks Great and Performs Even Better

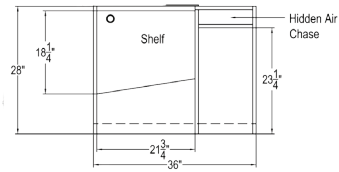
- Units are attractive and quiet, helping to promote healthier animals and increase adoptions
- Available in four attractive colors
- Available in single or double stack configurations
- Available in 3' or 4' widths
- Designed to meet the Association of Shelter Veterinarians guidelines for feline housing
- Offers separate litter, sleep, and exercise areas
- Doors are available with either tempered glass or white wire grid
- Comes standard with cat perching shelves
- Available with a closeable scuttle opening between top and bottom units
- Latches are trouble free and easy to operate
- Comes standard with easy close portal doors
- Units are available with or without casters
- Manufactured with a front debris retention lip
- Comes standard with swivel type casters for ease of movement



4' Wide Unit



3' Wide Unit



Stainless Steel Cat Condo

When Only Stainless Steel Will Do

- Designed in response to the Association of Shelter Veterinarians guidelines for feline housing
- Comes standard with sound deadening insulation between interior and outer casing
- Offers separate litter, sleep, and exercise areas for cats
- Smooth welded construction offers attractive interior and exterior appearance
- Comes standard with rear tempered glass window
- Dual point self-latching doors
- Comes standard with stainless steel portal doors
- Available with optional shelving spaces at the bottom of the unit
- Units are manufactured with a front debris and liquid retention lip
- Swivel type casters allow for ease of movement
- Comes standard with cat perching shelves
- All stainless steel construction
- Available as a roll around unit or without for built-in designs



Shown with optional shelving space at the bottom of the unit

