

MASON'S NEWEST SOLUTIONS

Silvis Seal™

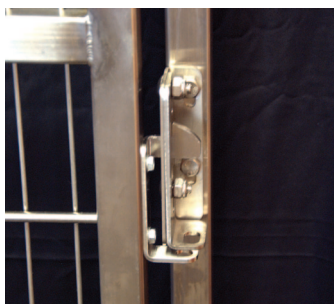
Cross Contamination Problems Solved



- Patent-pending design
- Prevents cross flow of fluids underneath panels - stops the spread of disease
- Molds to the contours and imperfections of your floor
- Aluminum Sani-Slope "T" provides adjustment to accommodate the slope of the run
- Holds up to common cleaning chemicals such as bleach and ammonia
- Provides a secondary seal for the life of the equipment
- Provides peace of mind that the runs will maintain positive isolation between one another
- Withstands high pressure power washing systems
- Ends are capped preventing fluids from getting underneath the seal

Stainless Steel Slide Gates

Another Customized Product and Patent-Pending Design from Mason



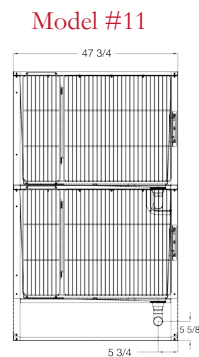
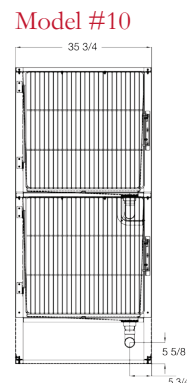
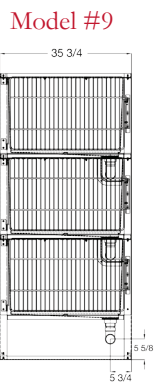
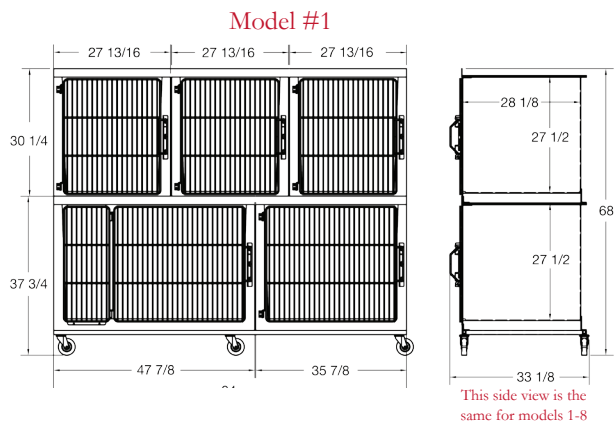
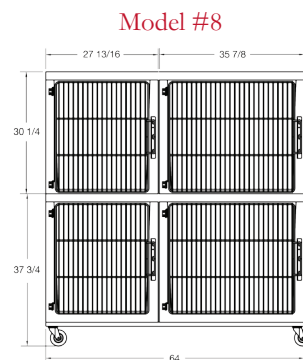
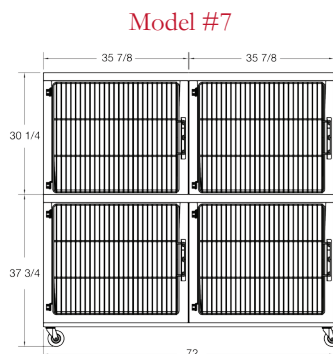
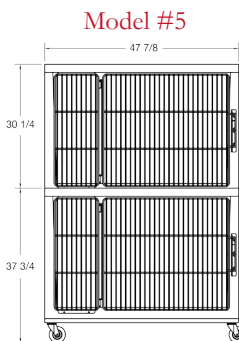
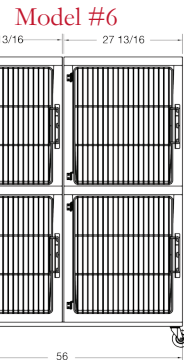
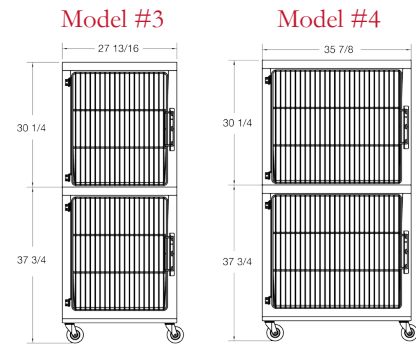
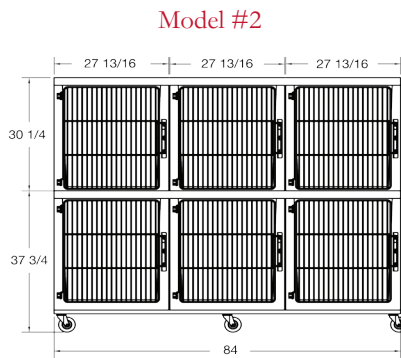
- Patent-pending latch design is trouble free and easy to operate
- Units allow for narrower aisles to maximize space
- Custom manufactured to any size desired to maximize a buildings footprint
- Made of all stainless steel components
- Comes with the same 10-year warranty offered on all Mason stainless steel gates
- Capable of being pad locked for increased security
- Available in FRP, Wilsonart, and tempered glass configurations
- Prevents aisle way obstructions when doors are left open
- Can be opened by kennel personnel from either outside or inside run

Quiet Cottages

The Quiet and Warm Alternative to Stainless Steel



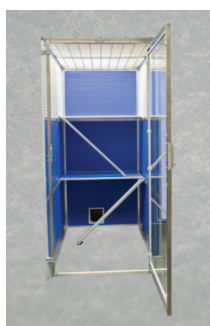
- Manufactured to provide warm, attractive and quiet animal housing areas
- Smooth molded fiberglass construction promotes easy cleaning and a healthy living environment
- Available in a several sizes and a variety of configurations
- Some models offered with drains for even quicker cleaning and drying time
- Models offered with drains have a removable $\frac{3}{4}$ " grid grate
- Manufactured with welded stainless steel doors for durability
- Comes standard with dual point self-latching doors
- Comes standard with swivel type casters for ease of movement
- Units are manufactured with a front debris and liquid retention lip
- Manufactured with a stainless steel support frame to maintain rigidity



Models #9, #10, and #11 come standard with drain

Custom Cat Runs

Designed to Meet Your Needs

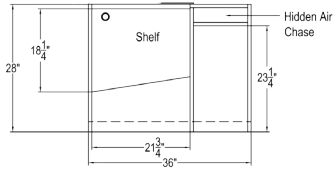
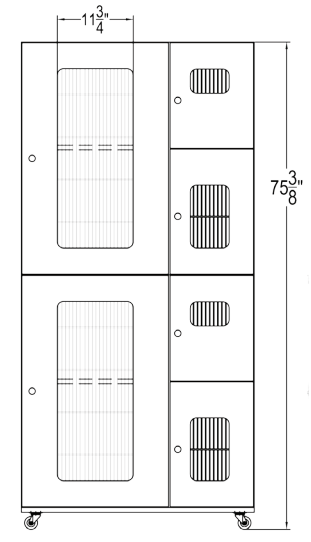
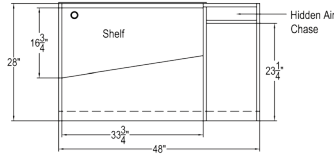
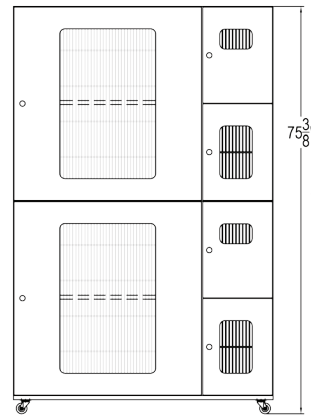


- Manufactured with durable FRP or Wilsonart laminates
- Available in hundreds of attractive colors
- Custom manufactured to any length, width, and height to maximize facility space
- Offers multiple levels that come with climbing ladders and perching shelves to promote exercise and play
- Available with or without cat doors
- Units are attractive and quiet, helping to promote healthier animals and increase cat adoptions
- Available with any style Mason gate (tempered glass, stainless steel, galvanized steel, and chain link)
- Comes standard with Mason's patented stainless steel two-way latch

Shelter Cat Condo

Looks Great and Performs Even Better

- Units are attractive and quiet, helping to promote healthier animals and increase adoptions
- Available in four attractive colors
- Available in single or double stack configurations
- Available in 3' or 4' widths
- Designed to meet the Association of Shelter Veterinarians guidelines for feline housing
- Offers separate litter, sleep, and exercise areas
- Doors are available with either tempered glass or white wire grid
- Comes standard with cat perching shelves
- Available with a closeable scuttle opening between top and bottom units
- Latches are trouble free and easy to operate
- Comes standard with easy close portal doors
- Units are available with or without casters
- Manufactured with a front debris retention lip
- Comes standard with swivel type casters for ease of movement



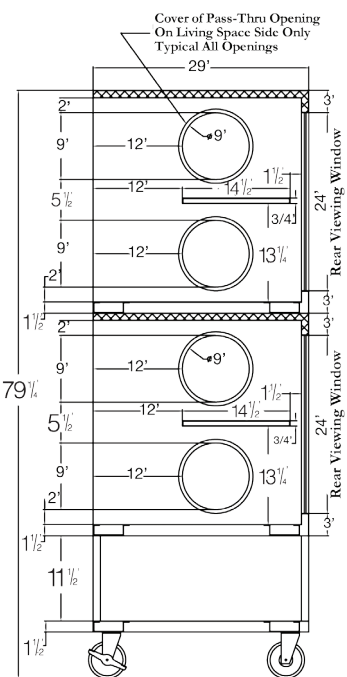
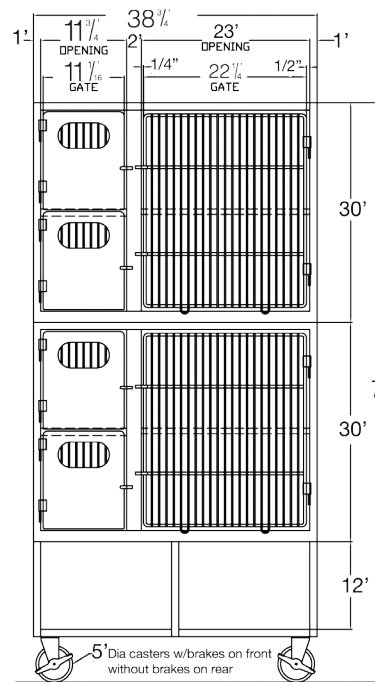
Stainless Steel Cat Condo

When Only Stainless Steel Will Do

- Designed in response to the Association of Shelter Veterinarians guidelines for feline housing
- Comes standard with sound deadening insulation between interior and outer casing
- Offers separate litter, sleep, and exercise areas for cats
- Smooth welded construction offers attractive interior and exterior appearance
- Comes standard with rear tempered glass window
- Dual point self-latching doors
- Comes standard with stainless steel portal doors
- Available with optional shelving spaces at the bottom of the unit
- Units are manufactured with a front debris and liquid retention lip
- Swivel type casters allow for ease of movement
- Comes standard with cat perching shelves
- All stainless steel construction
- Available as a roll around unit or without for built-in designs



Shown with optional shelving space at the bottom of the unit



K-9 Cabins

Double Your Housing Capacity



K-9 Cabins without drains – Custom sized to meet client requirements.



K-9 Cabins with drains – Come in 3' and 4' width, 3' and 4' depth and 75" height.

- Effectively doubles housing capacity and revenue potential
- Offered with or without drains
- Manufactured with FRP and Wilsonart materials to provide attractive and quiet housing areas
- Available in hundreds of different color choices
- Available in multiple sizes
- On models with drains built in, the one-piece floor/drain combination allows for easy cleanup
- Available with any style Mason gate (tempered glass, stainless steel, galvanized steel, or chain link)
- Available with side or back transfer doors
- Available with or without food/water bowl inserts

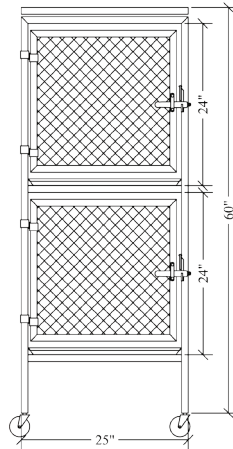
Portable Kennels

Affordable Caging Solutions

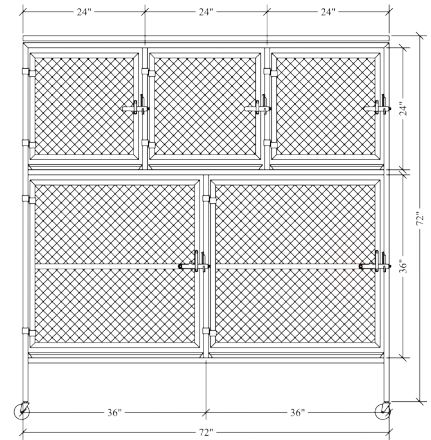


- Offers an economical alternative to stainless steel cage banks
- Available in four configurations (#2, #4, #5, & #6)
- Utilizes Mason's famous hand laced wire mesh
- Comes standard with a removable polyethylene floor grate that keeps animals out of liquid waste
- Galvanized floor pans collect waste and are removed without opening the door or contact with the animal
- Galvanized for maximum corrosion protection
- Latch is Mason's one-way latch and can accept a pad lock
- Units come standard with swivel type casters for ease of movement
- Hinges and latch catches are fully adjustable for the life of the unit

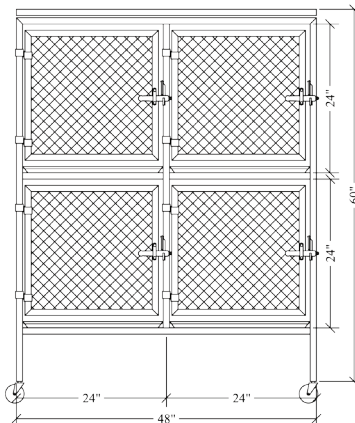
Model #2



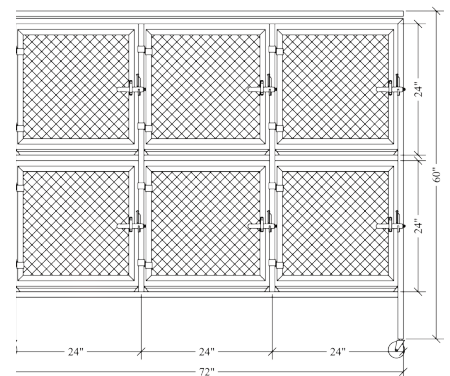
Model #5



Model #4



Model #6



**MASON
COMPANY**



A Tradition of Trusted Animal Enclosures Since 1892

800.543.5567
info@masonco.com
www.masonco.com

