



Woofington Luxury Petite Dog Resort & Spa

*Integrated Partners Provide Luxurious and
Safe Boarding Experience for Small Dogs*

PERMATEK
COATINGS



KENNEL
INSTALLATIONS INC.



MASON
COMPANY SINCE 1892

Trusted Animal Housing Solutions



Results

Working with three experienced partners – Mason Company, PermaTek Coatings and Kennel Installations – helped ensure the project was completed on time and on budget and kept all warranties intact.

With a capacity for 72 guests, the design of the Woofington exceeded the Larson's expectations. Mason's Sani-Kennels with the Silvis Seal® flexible gasket prevents cross-contamination by providing a solid watertight barrier underneath division panels. The K-9 cabin™ comfort suites are booked every weekend and the facility offers a luxurious feel for all guests.

"The facility is amazing and we are so pleased with the outcome," said Lisa Larson. "There are no bars and nothing that looks like a cage. All of the kennels are easy to clean and are simple to open using just one hand. We love them."

Instead of simply flat concrete floors, the upscale look of the kennels is complimented by beautiful PermaTek flooring that is easy to clean. Additionally, a Cyclo Vac central wet/dry vacuum system was installed to make cleaning and spraying disinfectant simple and quick. The daycare interior playroom is 100% recycled rubber flooring and the lobby is a ceramic tile that looks like dark walnut wood.

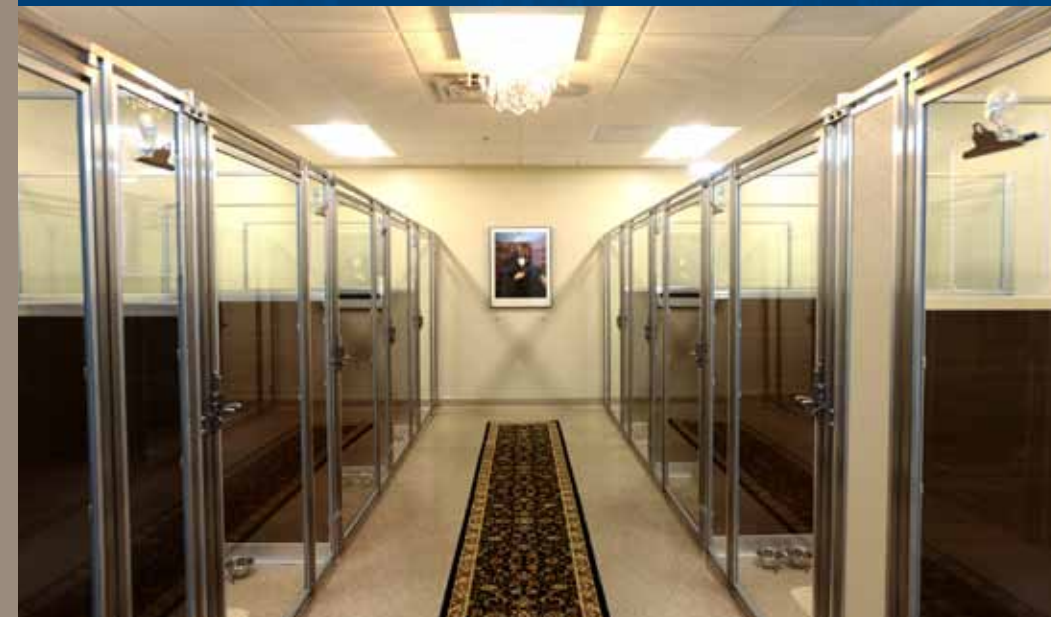
"My advice to others would be that if you have an idea in mind to talk with Mason Company. The solution they came up with for Woofington was better than I imagined. We are thrilled with TWC as the builder and the entire design process. The selection and installation of the floors went smoothly thanks to PermaTek Coatings and Kennel Installations seamlessly handled the installation. We picked the right partners and trusted them to do their jobs," said Larson.



Background

The Woofington Luxury Petite Dog Resort & Spa offers a full-service, luxury experience for small breed dog guests weighing 25 pounds or less. The first location of its kind in the Twin Cities area, the Woofington is located in the Lake Minnetonka community of Navarre in Minnesota.

When designing the facility, the goal was to create an "all-suite" environment to ensure overnight guests would have a variety of options all while providing easy to clean kennels with superior cross contamination protection to ensure animal welfare.



Challenge

The owners, Mike and Lisa Larson, wanted to create interior luxury suites that pampered each and every client with beautiful and functional interior and exterior exercise and play spaces. They also wanted to ensure the equipment was durable, easy to clean and prevents the spread of disease.

The Larson's researched options, visiting a number of facilities. "We found a common theme in the facilities we visited was a lack of transparency, and we wanted full transparency with every aspect of the facility visible to our customers," said Lisa Larson.

The Larson's chose TWC Architecture and Construction, a nation-wide design-build firm that specializes in the veterinary industry, for the project. Tim Parsons, TWC architect, was challenged with converting a 7,310 square foot cabinet store into a high-end, luxury boarding facility with a West Indies feel.

"The site and the building were run down and both were in need of serious repair," said Parsons. "We also needed to address some zoning issues before we could convert the building."

The Larson's also wanted a flooring solution that offered an upscale look consistent with the rest of the facility. The building was built in 1956, and the flooring needed to provide an updated look while still being functional in areas where the floor was not level.



Solution

The Larson's selected Mason Company to manufacture the equipment, PermaTek Coatings to provide the flooring solution and Kennel Installations to install the kennels. Mason Company had the ability to provide the customized solutions to create the look they wanted without bars while also providing safe and durable equipment that was easy to clean.

"We didn't want an open warehouse full of kennels," said Lisa Larson. "TWC was able to work with Mason Company to design kennels built in pods of four to ten to mitigate noise. Additionally, the design ensures every room in the building is viewable so there are no hidden spaces."

TWC designed the Woofington with an array of room sizes ranging from cozy comfort suites to mini-hotel suites all with sleeping arrangements that create a feeling of safety and luxury. The facility includes 37 of Mason Company's six-foot tall Sani-Kennels with Columbian walnut wood grain Wilsonart division panels and full height tempered glass stall fronts. They are outfitted with walnut colored beds, pillows, oriental rugs and chandeliers to create an elegant, British colonial feel. The Sani-Kennels include Mason Company's exclusive patented Silvis Seal® system to create a watertight long-term seal that stops fluids and contaminants from migrating between kennels.

Additionally, there are eight Mason Company 3' x 5' double stacked K-9 cabins with wood grain Wilsonart panels with all tempered glass fronts. The Larson's also selected Kennel Installations, Inc. to handle installation of all of Mason Company's equipment to ensure it was professionally installed by factory-trained personnel.



Designed by TWC Architecture and Construction



*"The facility is amazing and we are so pleased with the outcome," said Lisa Larson.
"There are no bars and nothing that looks like a cage. All of the kennels are easy to clean and are simple to open using just one hand. We love them."*

PermaTek Coatings, a national epoxy flooring and installation company that specializes in animal care flooring and partners with Mason Company, provided a tan tile flecked epoxy flooring throughout the kennel area. The durable and hygienic solution offers an elegant look that is consistent with Woofington's color theme.

"After Mason Company was awarded the project and the collaboration began, we quickly realized that we were working with the right company. It's hard to imagine another company offering broader range of customization options."

Mason Company's Cat Tower features larger, more open areas as well as multiple levels of play area and living space, including hiding areas and spaces to allow cats to climb. The litter area is down at the bottom of the tower, and hidden behind frosted glass. The height of the litter area also allows cats to eliminate in their normal posture. The Cat Tower can be designed with options for use with one cat, a family of cats or a room of cats depending on specific needs. Portals are available between units to open up more space if required. The units can also be used with other small animals, such as rabbits.

Combining Our Strengths to Maximize Your Success

Mason Company, PermaTek Coatings and Kennel Installations are proud of the partnership we have formed to provide you with the most effective animal industry solutions. Our combined experience ensures Mason Company provides an effective design to meet all of your animal housing needs. A national epoxy flooring and installation company, PermaTek Coatings specializes in animal care flooring. Seamless installation services by the professionals at Kennel Installations helps ensure your facility opens on-time and on-budget.

Combine Mason Company, PermaTek Coating and Kennel Installations for a turnkey solution that won't result in paying for someone else's learning curve.



Need more information?

Contact Mason Company at info@masonco.com or **800.543.5567**

Contact PermaTek Coatings info@permatekcoatings.com or **937.780.1075**

Contact Kennel Installations at info@kennelinstallations.com or **937.403.6633**